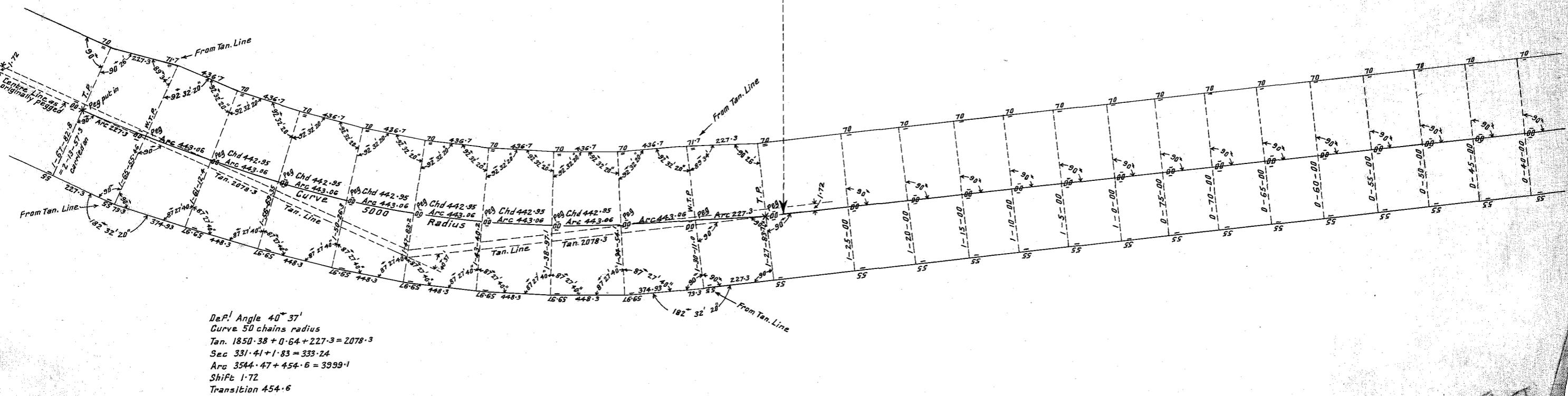
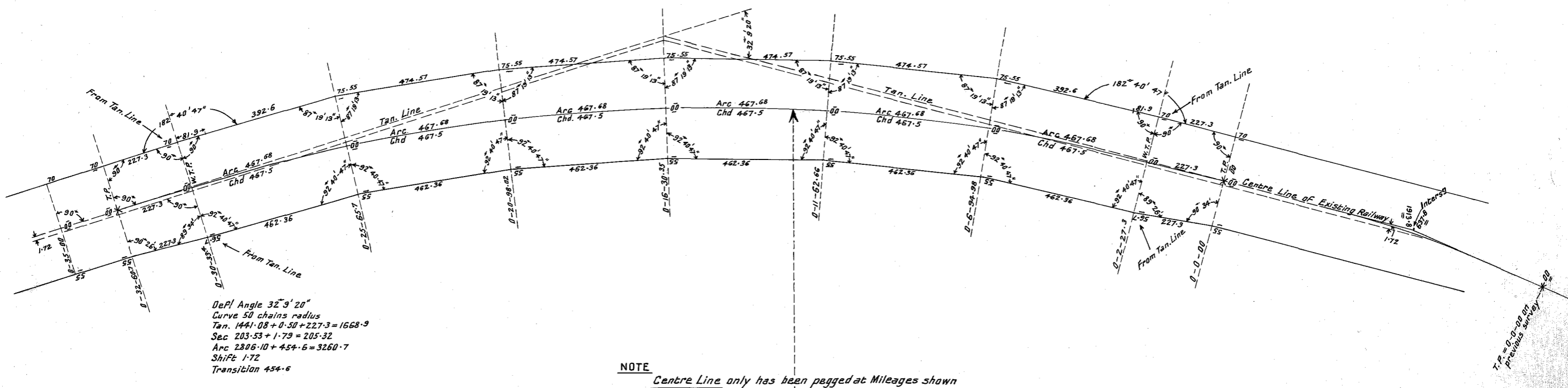


V. R.  
RAILWAY CONSTRUCTION  
— CASTLEMAINE TO MARYBOROUGH —  
— DEVIATION AT JOYCE'S CREEK —  
— AMENDED ALIGNMENT O.M.D.C. 00L. TO 1M.67C.83L. —  
— DIAGRAM FOR SETTING OUT FENCE LINES —

1/11/11 165



30/4145